



Press Release April 2019

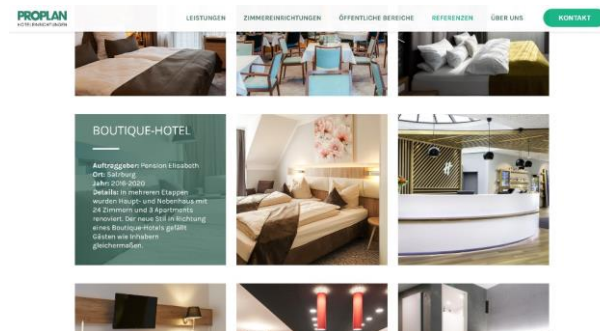
Modern ambience with added comfort: Renovation in the Pension Elisabeth in Salzburg



Located in the heart of the Schallmoos district on Vogelweiderstrasse, Pension Elisabeth has completely renovated all of its 24 rooms, public areas and shared bathrooms in recent months. With the very comfortable rooms equipped with all the important facilities, the pension wants to appeal equally to short staying Salzburg explorers, business travelers but also long-stay guests.

For a total budget of about 250,000 Euros, the family business, located just a 7-minute walk from the main train station, took advantage of the weaker off-season at the beginning of the year to carry out the work.

The company ProPlan from Rosenheim was responsible for the new interior concept, while the company Salzburger Installationen from Eugendorf was responsible for the complete renovation and reconstruction of all bedrooms, bathrooms, and public areas.



[Reference ProPlan](#)



[Reference Salzburger Installationen](#)

The extensive renovations created real added value for guests, taking into account customer requests and complaints as well as the modern requirements of international city tourism and the Thallmayer family's own travel experience. The result is a well-thought-out concept in which a lot of attention was paid to practical details in order to be able to offer travelers from all over the world the highest possible level of comfort - even in inexpensive economy rooms.

Modern Interior Meets Hotel with Long Standing Family Tradition

The Situation Before Renovation:

The house, built in 1948/1949 with the modest resources of the post-war period, is managed in the third and fourth generations, respectively, by the granddaughter and great-grandson of the original owner. The biggest reconstruction so far happened in 2000: A floor with seven new rooms was added - for the first time with private bathroom. The room furnishings were last completely renewed in 2003-2005; this was followed by continuous improvements and smaller renovations - e.g. the transition from mechanical keys to electronic key cards, the installation of air conditioning in about 60% of the rooms, the replacement of mattresses and chairs, the expansion of the wifi network or the renovation of the terrace in front of the Garden Suite.

But in the older rooms, the plumbing, piping, electrics, and partition walls were still at post-war levels. The partition walls were made of a straw and concrete mixture, which was common at the time, and were therefore extremely sensitive to noise, which led to frequent complaints from guests. The electrical system was not designed to meet the requirements of modern tourists, and could cause power outages if someone used an "exotic" kettle, for example.

Furthermore, gradually, certain construction defects from previous renovations had become apparent, which affected plumbing fixtures and led to water damage in the rooms below.

And in most of the rooms - after many years of constant use - the furnishings were aging, with obvious signs of wear on the furniture and floors, whose style was no longer in keeping with modern aesthetics. All this had a negative impact on the guest experience.

A few impressions of the guest rooms from before the renovation:

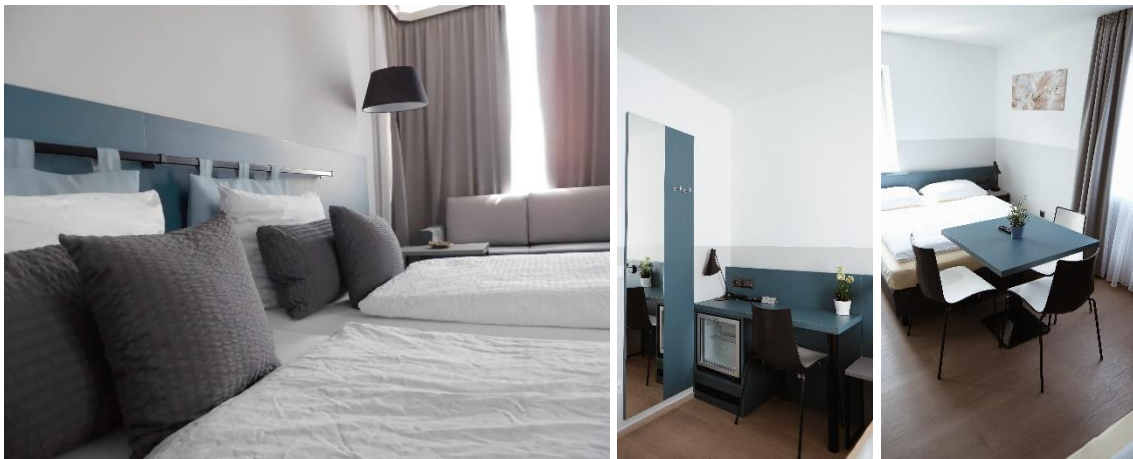


A New Beginning:

The Concept:

The proven mix of affordable economy rooms with shared bathrooms and larger rooms with private bathrooms has been maintained in order to continue to provide a place to stay for a wide range of guests with different needs and different financial capabilities. However, we have strived to achieve a state of top comfort in all rooms - regardless of the room category.

The room concept follows the same modern furnishing style that was implemented in the public areas at the same time and is kept in aesthetic blue tones. To match, particularly impact-resistant and high-quality - but no less stylish - vinyl flooring was laid. Concealed light strips in the rooms provide pleasant, indirect lighting.



The Renovation:

The rooms were completely gutted and rebuilt in several weeks of construction work - in part with a new, optimized floor plan. The old partition walls were torn out and rebuilt using higher-quality materials. The piping and electrical systems were renewed all around.



All bathrooms have been renovated from top to bottom, elegantly re-tiled, and fitted with contemporary sanitary fixtures with a feel-good factor as well as a new lighting concept. This applies to both the en-suite bathrooms and the shared bathrooms.

A New Level of Comfort Was Achieved:

In The Bathrooms and Common Areas:

All showers are now modern walk-in showers with rain shower, hand shower and user-friendly temperature control. In the newly designed shared bathrooms, there are even showers with colored, individually controllable lighting effects - for a particularly relaxing shower experience.

Thanks to the new towel radiators in all bathrooms and stylish open shelving, everything you need is quickly at hand.

Shampoo/shower gel dispensers are now installed in all bathrooms.

The communal toilets lack nothing either: New additions in each communal toilet include a sink, complete with soap and paper towel dispensers, a dispenser for hygienic disinfection of the seat and another with hand sanitizer.

Thanks to the high-quality, impact-resistant vinyl flooring and the well thought-out lighting concept, the corridors now appear much tidier, and with the bath slippers now available on request, it is all the more comfortable to walk from the bedroom to the shared bathroom.

Additional comfort is also provided by a newly created area in the hallway, accessible to all guests, with a coffee machine, hot water dispenser and microwave, where you can get a free hot drink at any time or heat up a snack you've brought yourself.



In The Bedrooms There Are Many New Amenities:

All rooms have been equipped with new, allergy-friendly design flooring, which has also been used in the bathrooms. Comfortable quality mattresses, as well as new, fluffier pillows and blankets, ensure a particularly high level of sleeping comfort. High-quality furniture as well as (in the highest category level) armchairs and sofas in elegant fabrics complete the picture. In combination with paintings - created by Matea Thallmayer herself, the wife of the junior chef - the result is a trendy overall picture for a pleasant Salzburg stay.



A generous space to work, with reading lamp, large free desk area, enough power sockets and high-speed WiFi make completing business tasks and studying as pleasant as it can be.



The sinks in the economy rooms with shared bathrooms are particularly elegant.

All rooms are now equipped with blackout curtains - morning sun was previously a frequent cause for complaint.

Open clothes rails in the rooms provide the best overview, and practical suitcase racks are a great help if you don't want to unpack all your luggage during short stays.

The new refrigerators for all rooms allow budget-conscious travelers to stock up on their own food. They integrate perfectly into the interior design concept, and are also energy-saving and quiet.

Safes in every room have long been a common standard in hotels, but for us they are an innovation worth mentioning, so that valuables can be stored securely with a freely selectable code.

As a special comfort highlight, USB sockets have been installed at many beds' headboards, so that you can continue to use your smartphone while lying comfortably in bed and charging it - without having to use an adapter.

New, larger flat-screen TVs complete the technology upgrade.



Press Contact:

Pension Elisabeth

Luigi Thallmayer

Vogelweiderstraße 52, 5020 Salzburg, Österreich

Tel.: +43 662 871 664

E-Mail: lt@pension-elisabeth.at

Internet: www.pension-elisabeth.at